

Spectrum Sweeper

X SWEEPER

The X Sweeper is a nearfield receiver with a graphical display that displays the nearfield RF (analog only) in a spectrum format, allowing the user to rapidly observe all signals that are present, not just one single frequency at a time. Once a signal is received, the X Sweeper demodulates the FM audio through its built in speaker. With a frequency range of 30MHz - 3GHz, the X Sweeper can sweep and lock onto a broad range of frequencies in a matter of seconds. The 25 button keypad allows easy access to all functions, provides a direct numerical entry for the center frequency of the sweep range to be easily selected, and easily tunes to a specific frequency in VFO mode.

The X Sweeper has 4 different modes, SWEEP, MEMORY, SCAN, and VFO.

SWEEP MODE: The center frequency and sweep span may be changed by direct entry from the keypad. The 10 sweep spans are, 3GHz, 1GHz, 300MHz, 100MHz, 30MHz, 10MHz, 3MHz, 1MHz, 300kHz and 100kHz.

MEMORY MODE: The X Sweeper has 10 different memory banks with the ability to hold up to 100 different frequencies in each bank. This gives the X Sweeper 1000 unique memories and the ability to store up to 65,000 hits per frequency. Each time a signal is received it is automatically stored with a time and date stamp as well as a relative signal strength reading.

SCAN MODE: The X Sweeper will scan all frequencies in a specific bank that were previously saved while in SWEEP or VFO mode. This is a convenient way to determine if frequencies captured from an earlier session are still active.

VFO MODE: The X Sweeper may be tuned to specific frequency in VFO mode. Frequencies may be programmed and saved to a specific memory bank for inclusion in SCAN mode. Frequencies may also be saved to MEMORY mode and locked out.

Antenna sold separately

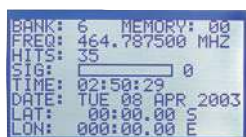
The X Sweeper has a built-in RS232 port for downloading data from memory (cable and software included). A CI5 port is also available and can be used for performing the Optoelectronics patented Reaction Tune function.

SCAN



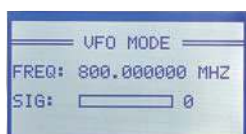
The X Sweeper has the ability to scan frequencies already saved to memory helping to determine if frequencies captured previously are still active.

MEMORY



There are 10 unique memory banks holding up to 100 different frequencies in each bank. Store Frequency, Hits, Signal Strength, Time, Date, and Lat/Long. (GPS option required)

VFO



Tune to a specific frequency by entering that frequency directly into the keypad while in VFO mode. A frequency may be stored and then manually locked out in MEMORY mode.

Sweep 30MHz-3GHz in one second and display the nearfield RF present (analog only). Once a signal is detected, the FM audio is demodulated through the speaker. There are 10 different span widths from 3GHz to 100kHz.

SWEEP



There are 10 different sweep spans (3GHz, 1GHz, 300MHz, 100MHz, 30MHz, 10MHz, 3MHz, 1MHz, 300kHz and 100kHz). If the center frequency was entered as 400 MHz and sweep span was selected as 100MHz, the X Sweeper would sweep from 350MHz to 450MHz and display any signals present in that range. Any signals outside this range would not be displayed.

SWEEP SPAN



Spectrum Sweeper

X SWEEPER

GPS OPTION

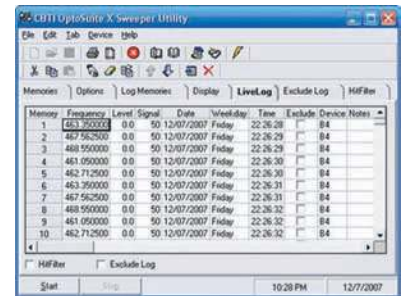
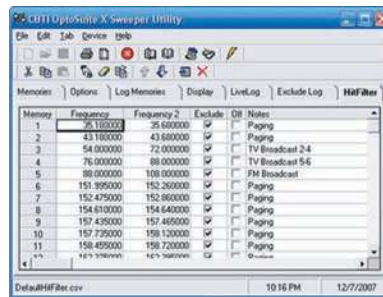
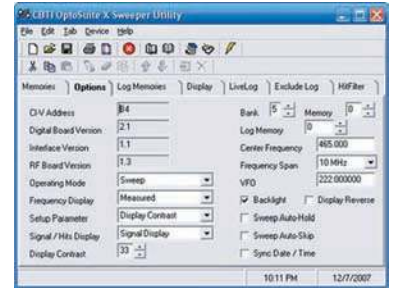


The X Sweeper has an optional GPS receiver and antenna. The GPS receiver module and antenna are factory installed inside the X Sweeper. The GPS option displays the Latitude and Longitude coordinates of the X Sweeper location at the time it detected a signal.

GPS MODULE AND ANTENNA
SOLD SEPARATELY

OPTO SUITE X SOFTWARE

The OptoSuite X software extends the X Sweeper live display to your computer. Download memories, configure all settings including sweep span and center frequency. Live Log records frequency hits in real time. Hit Filter eliminates undesired real time frequency hits. Compatible with 95,98,ME,NT4,2000,XP and Vista. (Software sold separately)



FEATURES

- Sweeps range of 30MHz to 3GHz in one second
- 10 different sweep spans ranging from 3GHz to 100kHz
- 64X128 graphical display with white LED backlight
- Built-in VFO mode for manually tuning to a specific frequency
- Super Sensitivity: Receive two-way communications up to 1/4 mile away
- 10 memory banks with 100 frequencies in memory for each bank. Total of 1000 unique memories
- Record frequency, hits (65,000), time/date, signal strength, lockout status, lat/long (GPS optional)
- RS232 interface for memory download (cable included)
- Real-Time Clock / Calendar with battery back-up
- Lockout up to 1000 frequencies
- CI5 interface for Reaction Tune (For a list of compatible receivers see the Digital Scout specs)
- Internal Speaker, Audio earphone/headphone jack
- Battery operated (8 AA alkaline (included), NiCad or NiMH) AC adapter included (9-12VDC)
- Tilt stand included
- Ideal for Homeland Security, Two Way Radio, Military, Broadcast and more

X SWEEPER TECHNICAL SPECIFICATIONS

Frequency Range:	30MHz - 3GHz (US versions: Cellular blocked except for FCC approved users)
Modulation:	FM analog
Frequency Response:	50 - 3000MHz
Auto Sweep Time:	1 Second
Frequency Measurement:	100Hz Resolution, +/- 500Hz Accuracy
Sensitivity:	300uV@500MHz
Input:	50 Ohm BNC
Outputs:	Internal Speaker, Audio Headphone Jack, Serial Interface, CI5
Display:	64X128 Graphical display with white LED backlight
Power:	8 AA Alkaline (included), NiCad or NiMH (appx. 8 hour run time) AC adapter (9-12VDC/350mA/center positive)
Size:	8"H x 4.25"W x 2.25"D Injection molded plastic
Serial Interface:	RS232C interface and CI5 interface